

MS27101A-IBCM

In-Building Coverage Mapper Bundle

Ensure Proper In-Building Wireless Coverage of Public Safety, Commercial, and Private Networks

The MS27101A-IBCM In-Building Coverage Mapper Bundle enables technicians to verify proper signal field strength across multiple frequencies in a single walk-through. Any signal from 9 kHz to 6 GHz can be scanned including: all public bands (all LTE bands), Wi-Fi, NB-IoT, and public service bands (P25, DMR, LTE/FirstNet, UMTS/WCDMA, LMR).

Fully Integrated Solution

When coupled with a user-supplied Android device and laptop PC, the MS27101A-IBCM provides everything technicians need to complete an in-building coverage mapping exercise for multiple frequencies.

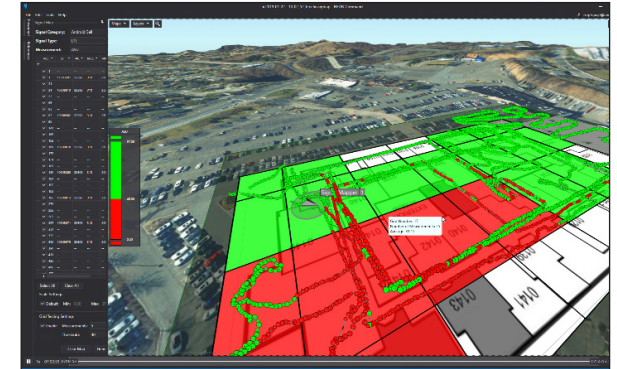
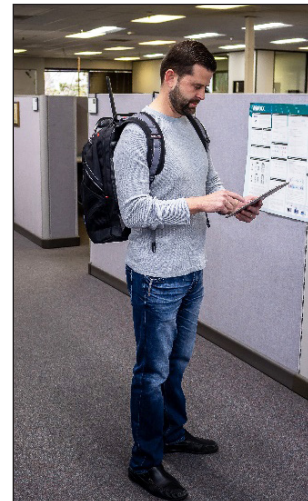
- Remote Spectrum Monitor MS27101A covering 9 kHz to 6 GHz
- NEON[®] MA8100 Signal Mapper delivers real-time, 3D location information and includes:
 - NEON Tracking Unit to collect and process sensor data
 - NEON Signal Mapper application with intuitive Android interface imports building floorplans and collects both RF data and coordinates it with position data from NEON Tracker Unit (Android device not included)
 - NEON Command Software running on a PC analyzes and displays collected data and manage cloud storage (PC is not included)
- Battery pack for up to 4 hours of coverage mapping
- Anritsu backpack for portability and protection
- Accepts all antennas sold by Anritsu

Key Benefits

- **No GPS signal required:** a small tracking device actively records scanning position
- **Quickly import floorplans:** 3D mapping software seamlessly inputs floorplans from a photo or exterior building data from satellite imaging maps, simplifying setup time
- **Map stairwells, elevators, and other difficult areas easily:** software automatically tracks your 3D position without the need for a GPS signal
- **Easily document compliance tests:** coverage results can be saved locally for security reasons or uploaded to the cloud for convenience and ease of record keeping



Android device shown is not included.



4TECT

ООО «4TECT»

Телефон: +7 (499) 685-4444

info@4test.ru

www.4test.ru

MS27101A-IBCM In-Building Coverage Mapper Bundle

Remote Spectrum Analyzer MS27101A Specifications

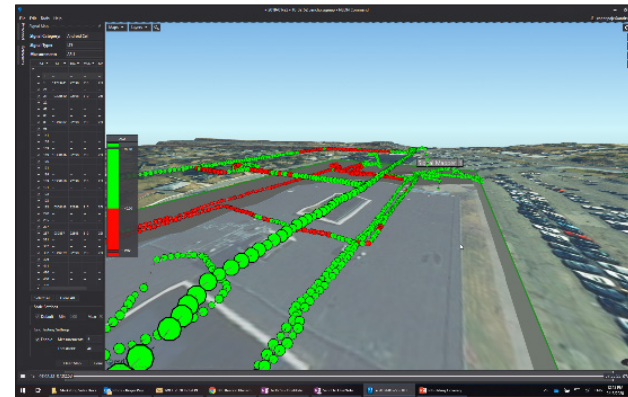
General	
Frequency Range	9 kHz to 6 GHz (tunable to 0 Hz)
Tuning Resolution	1 Hz
Maximum Sweep Speed	24 GHz/s
Resolution Bandwidth (RBW)	10 Hz to 3 MHz in 1-3 sequence (-3 dB bandwidth)
Video Bandwidth (VBW)	10 Hz to 3 MHz in 1-3 sequence (-3 dB bandwidth) (auto or manually selectable)
SSB Phase Noise @ 1GHz	-98 dBc/Hz @ 10 kHz offset
Dynamic Range	> 106 dB at 2.4 GHz, 2/3 (TOI-DANL) in 1 Hz RBW
Measurement Range	DANL to maximum continuous input
Reference Level Range	-150 dBm to +30 dBm
Attenuator Range	0 dB to 50 dB in 5 dB steps
Amplitude Units	Log Scale Modes: dBm, dBμV
Amplitude Accuracy	±2.5 dB
Operating Temperature Range	-40° C to 50° C

The MS27101A-IBCM Bundle Consists of:

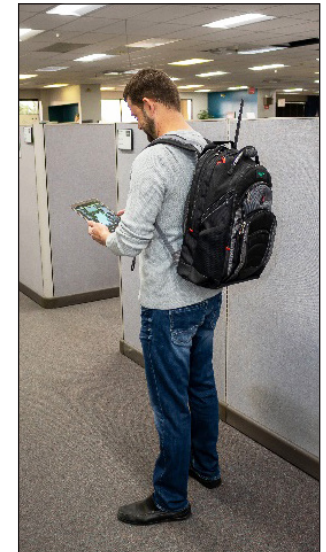
Part Number	Description
MS27101A	Remote Spectrum Monitor with Integrated IP
MS27101A-0706	9 kHz to 6 GHz Frequency Range
MA8100A-001	NEON Signal Mapper with Anritsu Integration Includes: - NEON Tracking Unit - NEON Signal Mapper Application for Android Device - NEON Command Software for PC
SM7004	Omni Power Bank
SM7005	DC Cable
2000-1752-R	Wireless Travel Router
SM7009	Protective Foam Pad Insert for MS27101A
10580-00470	Quick Start Guide
67135	Anritsu backpack

Optional Accessories

Part Number	Description
Antennas	Various antenna options available. For more information, refer to the Anritsu Antennas and Antenna Kits Technical Data Sheet located at anritsu.com .



3D coverage visualization in the NEON Command software (PC is not included)



Fully integrated backpack



NEON Command software and Tracking Unit (Android device not included)

Pricing | Ordering | Support

www.anritsu.com